



'77 Sea Ray

*Outstanding quality  
in fiberglass boats.*

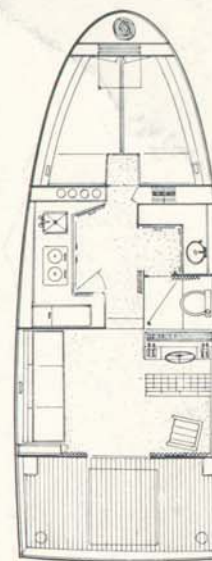


# SRV 300 Sedan, Sedanbridge





# Sunbridge (optional)



## Specifications:

Gunwale Length	30' 11"	(9.42 m.)
Centerline Length	29' 7"	(9.01 m.)
Beam	11' 6"	(3.50 m.)
Approximate Weight:		
Sedan	10,900 lbs.	(4944 k.)
Sedanbridge	11,300 lbs.	(5125 k.)
Sunbridge	11,500 lbs.	(5216 k.)

## Features and Standard Equipment:

### Hull:

Stainless Steel Bow & Stern Eyes  
 Stainless Steel Bow Rail—1" Welded (2.5 cm.)  
 Stainless Steel Grab Rails—1" Welded (2.5 cm.)  
 Teak Swim Platform  
 Saltwater Hardware  
 Tri-section Safety Glass Tinted Windshield—Welded  
 Sliding Side Windows—Tinted Safety Glass—Welded  
 Anodized Solid Aluminum Rub Rail  
 Teak Toe Rail (Aft)

Gel-coated Bilge Area  
 International Rule Navigation Lights  
 Non-skid Walk Area—Deck

### Cabin:

Private Forward V-Bunk with Storage  
 Convertible Sofa and Swivel Rocker Chair  
 Liquor Cabinet  
 Translucent Cabin Hatches  
 Hanging Locker  
 Forward Anchor Rope Locker  
 Side Storage Shelves  
 Deep Pile Shag Carpet  
 Two Reading Lights—Forward Cabin (12 V)  
 Two Reading Lights—Aft Cabin (12 V)

### Galley:

Two-burner Alcohol Stove  
 Stainless Steel Sink  
 3.5 Cubic Foot Ice Box (0.098 cubic meters)  
 Glass & Dish Storage Racks  
 Two Galley Cupboards, and Three Drawers  
 Double Shelf with Sliding Doors

### Vanity:

Separate Fiberglass Shower & Marine Head Enclosure  
 Vanity with Stainless Steel Sink & Double Light (12 V)  
 Linen Closet  
 Full Length Double Mirror  
 Medicine Cabinet with Sliding Mirrors

### Cockpit:

Self-Bailing Teak Plank Deck  
 Cockpit Side Storage Compartments  
 Indirect Cockpit Lighting

### Power Options:

Single 330 H.P. Inboard  
 Twin Inboards from 233 H.P. to 260 H.P.

### Systems:

Fiberglass Insulation Throughout Engine Area  
 130-Gallon (492 liters) Fuel Capacity (two aluminum plate tanks)

Anti-Siphon Valves  
 Water Separators and Filters for Engines  
 40 Gallon (151 liters) Fresh Water Supply  
 Pressure Water System with Filter  
 12 V Electrical System with Fused Panel  
 (All Gauges and Switches Backlit for Non-Glare Operation)  
 Dual Lever Binnacle Control  
 Automatic Bilge Pump with Indicator Light  
 Two Electric Bilge Blowers  
 Heavy Duty Steering  
 Bonding System Minimizes Electrolysis  
*\*Underwater Exhaust System*

### Underwater Hardware:

Manganese—Bronze Rudders  
 Manganese—Bronze Struts  
 Stainless Steel Prop Shafts, 1 1/4" (3 cm.)  
 Zinc Shaft Anodes  
 Two Zinc Hull Plates  
 Flush Integral Shaft Logs

*\*Patent Pending*

### Sedanbridge Only:

Bimini Top & Boot  
 Venturi Bridge Shield—Tinted  
 Stainless Steel Bridge Access Ladder—1" Welded (2.5 cm.)  
 Stainless Steel Grab Rails—1" Welded (2.5 cm.)  
 Bridge Captain's Chair—Adjustable  
 Bridge Companion Seats with Storage Compartment  
 Full Bridge Controls and Instrumentation  
 (All Gauges and Switches Backlit for Non-Glare Operation)  
 Companion-way Light  
 Hydraulic Steering  
 Covered Instrumentation on Bridge  
*Lower Station Controls Optional*

### Sunbridge Option:

Incorporates Sedanbridge features plus: 5' (1.52 m.) Bridge Extension with Two Portable Captain's Chairs. (Removable for Use in the Sheltered Lower Cockpit.)



# SRV 300 Weekender, Hardtop, Sportbridge



## Specifications:

Gunwale Length	30' 11"	(9.42 m.)
Centerline Length	29' 7"	(9.01 m.)
Beam	11' 6"	(3.50 m.)
Approximate Weight:		
Weekender	9,500 lbs.	(4309 k.)
Hardtop	9,900 lbs.	(4490 k.)
Sportbridge	10,300 lbs.	(4672 k.)

## Features and Standard Equipment:

### Hull:

Stainless Steel Bow & Stern Eyes  
Stainless Steel Bow Rail—1" Welded (2.5 cm.)  
Teak Swim Platform  
Saltwater Hardware  
Vented, Anodized Aluminum Skiff  
Windshield

Sliding Side Windows (Hardtop & Sportbridge)

Anodized Solid Aluminum Rub Rail  
Teak Toe Rail (Aft)  
Gel-coated Bilge Area  
International Rule Navigation Lights  
Soft Top & Boot (Weekender)

### Cabin:

Privacy Forward V-Bunk with Storage  
Convertible Dinette with Dining-Coffee Table  
Two Reading Lights (12 V)  
One Triple Light (12 V)  
Indirect Cabin Lighting (12V)  
Liquor Cabinet  
Cabin Windows  
Two Translucent Hatches  
Hanging Locker

Forward Anchor Rope Locker  
Side Storage Shelves  
Full-Length Mirror  
Deep Pile Shag Carpet

### Galley:

Two-burner Alcohol Stove  
Molded Fiberglass Sink  
3.5 Cubic Foot Ice Box (0.098 cubic meters)  
Glass and Dish Storage Racks

### Vanity:

Stand Up Enclosed Marine Head  
Fiberglass Vanity with Sink  
Double Light (12 V)  
Medicine Cabinet with Sliding Mirrors

### Cockpit:

Self-Bailing Fiberglass Deck

Stainless Steel Grab Rails—1" Welded (2.5 cm.)

Double Helmsman Seat  
Double Companion Seat  
Side Storage Shelves  
Indirect Lighting  
Teak Drink Holders

## Systems:

Fiberglass Insulation Throughout Engine Area  
130-Gallon Fuel Capacity (two aluminum plate tanks) (492 liters)  
Anti-Siphon Valves  
Water Separators and Filters for Engines  
40-Gallon Fresh Water Supply (151 liters)  
Pressure Water System with Filter  
12 V Electrical System with Fused Panel (All Gauges and Switches Backlit for Non-Glare Operation)  
Dual Lever Binnacle Control  
Automatic Bilge Pump with Indicator Light  
Two Electric Bilge Blowers  
12 V Cabin Lights  
Bonding System Minimizes Electrolysis  
*\*Underwater Exhaust System*

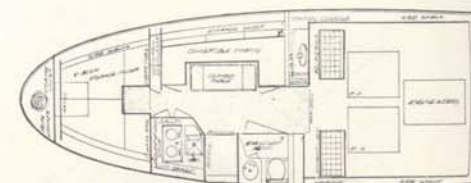
## Underwater Hardware:

Manganese—Bronze Rudders  
Manganese—Bronze Struts  
Stainless Steel Prop Shafts, 1 1/4" (3 cm.)  
Zinc Shaft Anodes  
Two Zinc Hull Plates  
Flush Integral Shaft Logs

## Power Options:

Single 330 H.P. Inboard  
Twin Inboards from 233 H.P. to 330 H.P.  
Twin Sterndrives from 188 H.P. to 280 H.P.

*\*Patent Pending*

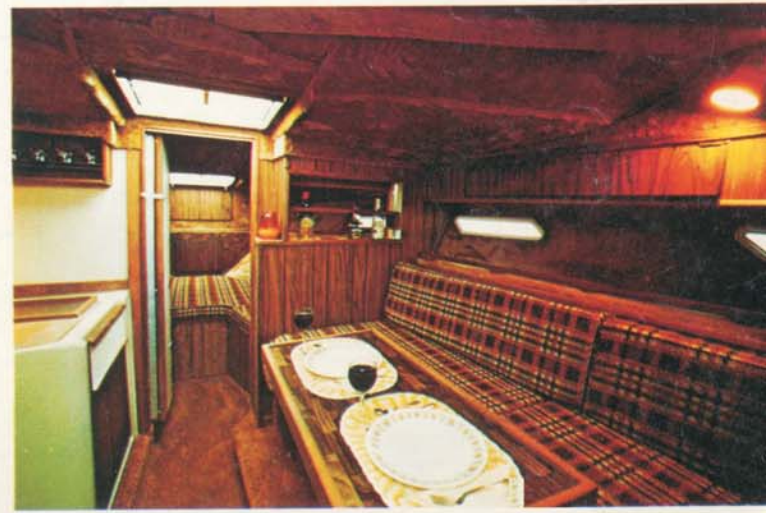
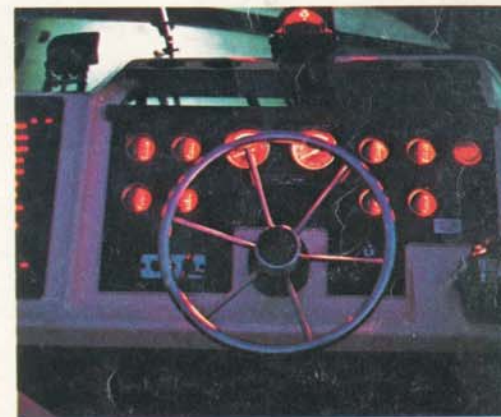






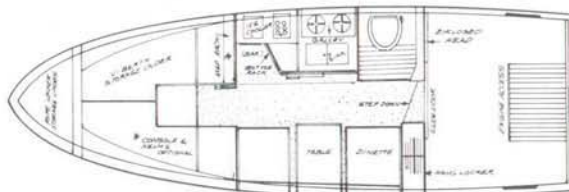
**Sportbridge Only:**

Venturi Bridge Shield—Tinted  
 Stainless Steel Bridge Access Ladder—1"  
 Welded (2.5 cm.)  
 Bridge Captain's Chair—Adjustable  
 Bridge Lounge Seat  
 Full Bridge Controls and Instrumentation  
 (All Gauges and Switches Backlit for  
 Non-Glare Operation)  
 Covered Instrumentation on Bridge  
 Bimini Top & Boot  
 12 V Fused Switched Panel





# SRV 240 Sedancruiser & Sedanbridge



## Specifications:

Gunwale Length	25' 8"	(7.82 m.)
Centerline Length	24' 4"	(7.42 m.)
Beam	96"	(2.44 m.)
Fuel Capacity	70 ga.	(265 l.)
Approximate Weight:		
Sedancruiser	4500 lbs.	(2041 k.)
Sedanbridge	4700 lbs.	(2131 k.)

## Standard Features:

Foam Flotation  
Stainless Steel Bow & Stern Eyes  
Stainless Steel Bow Rail  
Teak Taffrail  
Heavy Duty Steering  
International Rule Navigation Lights  
Automatic Bilge Pump & Electric Blower  
Safety Glass Venting Windshield  
Tinted Plexiglass Venturi Shield (SDB only)  
Custom Deck Ventilators  
Forward Anchor Locker  
Teak Full Transom Swim Platform with Folding Ladder  
Sedan Enclosure with Sliding Door

## Standard Cabin Features:

Built-In Bar & Map Case (SDB)  
Full Stand-Up Head Room  
Deck Hatch  
Sliding Side Windows  
Side Shelf Storage  
Indirect Lighting  
Marine Carpeting  
Forward V-Bunk with Bulkhead Mirror  
Convertible Dinette and Complete Galley  
Featuring:  
Alcohol Stove, Ice Box, Sink, and Electric Water System.  
Hanging Locker

## Standard Cockpit Features:

Non-Skid Fiberglass Floor

Self-Bailing, Flush Deck  
Floor Storage  
Indirect Lighting  
Stand-up Enclosed Head—Recirculating  
Removable Fish Box Aft Seat (48" in Length) (1.22 m.)  
Bridge Pedestal Seats (SDB)  
Custom Dash with Recessed Instrumentation and Speedometer  
Single Lever Binnacle Control  
Custom Fused Switch Panel

## Factory Installed Options:

Bimini Sport Top & Boot (SDB)  
Bridge Cover (SDB)  
Taffrail Curtain  
Windshield Cover Set

Electric Horn  
Dash Controlled Spotlight  
Compass  
Hour Meter  
Windshield Wipers  
Hydraulic Trim Tabs  
Translucent Deck Hatch  
Alcohol/Electric Stove  
110 V/12 V Refrigerator  
110 V/115 V Dockside Power

## Sedanbridge Lower Station Option:

Full Instrumentation and Controls with Hydraulic Steering and Helm Seat (in lieu of Bar & Map Storage Areas)



# SRV 240 Sundancer



## Standard Cabin Features:

Full Stand-up Head Room  
Translucent Cabin Deck Hatch  
Marine Carpeting  
Hull Windows  
Side Shelf Storage  
Indirect Lighting  
Stand-up Enclosed Head—Recirculating  
Forward V-Bunk with Dinette Table and Bulkhead Mirror  
Complete Galley Featuring:  
Alcohol Stove, Ice Box, Sink, and Electric Water System

## Standard Cockpit Features:

Non-skid Fiberglass Floor  
Self-Bailing, Flush Deck  
Side Panel Storage  
Floor Storage  
Indirect Lighting  
Double Width Helm Seat with Fold-down Aft Facing Companion Seat  
Removable Fish Box Aft Seat (48" Length) (1.22 m.)  
Custom Dash with Recessed Instrumentation and Speedometer  
Plexiglass Instrument Shield  
Custom Fused Switch Panel  
Single Lever Binnacle Control

## Factory Installed Options:

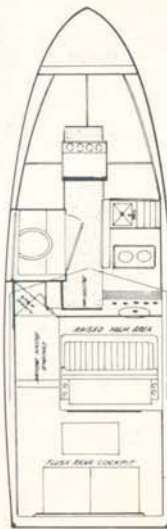
Bimini Sport Top & Boot  
Front & Side Curtains  
Aft Curtain  
Mooring Cover  
Helm Cover  
Taffrail Curtain  
Alcohol/Electric Stove  
110 V/12 V Refrigerator  
110 V/115 V Dockside Power  
Electric Horn  
Dash Controlled Spotlight  
Compass  
Hour Meter  
Hydraulic Trim Tabs

## Specifications:

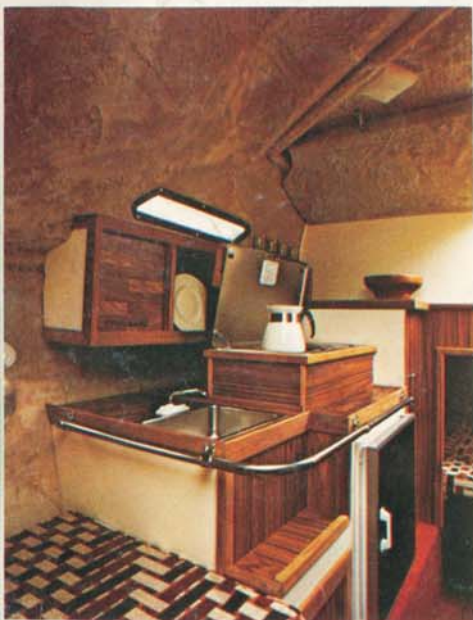
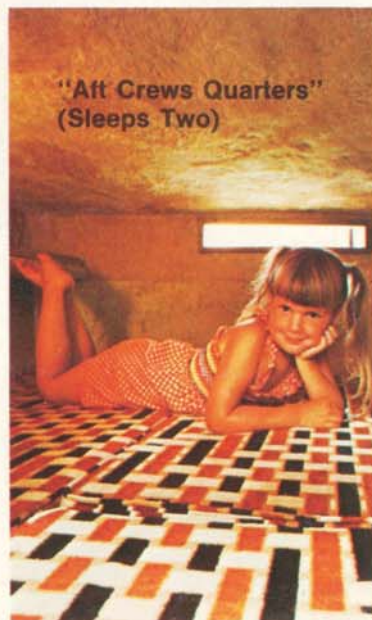
Gunwale Length	25' 8"	(7.82 m.)
Centerline Length	24' 4"	(7.42 m.)
Beam	96"	(2.44 m.)
Fuel Capacity	70 ga.	(265 l.)
Approximate Weight	4500 lb.	(2041 k.)

## Standard Features:

Foam Flotation  
Stainless Steel Bow & Stern Eyes  
Stainless Steel Bow Rail  
Heavy Duty Steering  
Teak Taffrail  
Teak Full Transom Swim Platform with Folding Ladder  
International Rule Navigation Lights  
Forward Anchor Locker  
Custom Deck Ventilators  
Tinted Venturi Shield  
Automatic Bilge Pump and Electric Blower

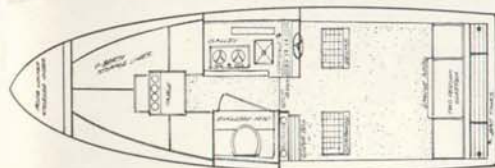


"Aft Crews Quarters"  
(Sleeps Two)





# SRV 240 Weekender



## Specifications:

Gunwale Length	25' 8"	(7.82 m.)
Centerline Length	24' 4"	(7.42 m.)
Beam	96"	(2.44 m.)
Fuel Capacity	70 ga.	(265 l.)
Approximate Weight	4400 lbs.	(1995 k.)

## Standard Features:

Foam Flotation  
Stainless Steel Bow & Stern Eyes

Stainless Steel Bow Rail  
Heavy Duty Steering  
Teak Taffrail  
Teak Full Transom Swim Platform with Folding Ladder  
International Rule Navigation Lights  
Forward Anchor Locker  
Custom Deck Ventilators  
Safety Glass, Full Vent Windshield  
Convertible Top  
Automatic Bilge Pump & Electric Blower

## Standard Cabin Features:

Full Stand-up Head Room  
Translucent Cabin Deck Hatch

Marine Carpeting  
Side Shelf Storage  
Indirect Lighting  
Stand-up Enclosed Head—Recirculating  
Forward V-Bunk with Dinette Table and Bulkhead Mirror  
Hull Windows  
Complete Galley Featuring:  
Alcohol Stove, Ice Box, Sink, and Electric Water System

## Standard Cockpit Features:

Marine Carpeting  
Insulated Engine Compartment  
Side Panel Storage

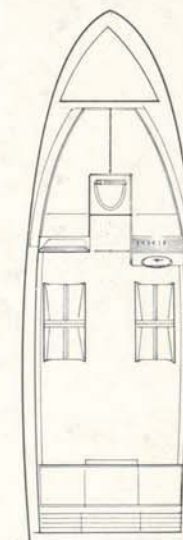
Floor Storage  
Insulated Ice Chests in Aft Deck  
Indirect Lighting  
Two Adjustable Helmsman Seats  
Aft Jump Seats—Convertible to Bunk  
Custom Dash with Recessed Instrumentation and Speedometer  
Custom Fused Switch Panel  
Single Lever Binnacle Control

## Factory Installed Options:

Top Boot  
Side & Aft Curtains  
Camper Aft Cover  
Mooring Cover  
Alcohol/Electric Stove  
110 V/12 V Refrigerator  
110 V/115 V Dockside Power  
Electric Horn  
Dash Controlled Spotlight  
Windshield Wipers  
Compass  
Hour Meter  
Hydraulic Trim Tabs



# SRV 240 Cuddy Cabin



## Specifications:

Gunwale Length	25' 8"	(7.82 m.)
Centerline Length	24' 4"	(7.42 m.)
Beam	96"	(2.44 m.)
Fuel Capacity	70 ga.	(265 l.)
Approximate Weight	4000 lbs.	(1814 k.)

## Standard Features:

Foam Flotation  
Stainless Steel Bow & Stern Eyes  
Stainless Steel Bow Rail  
Heavy Duty Steering  
Teak Taffrail  
Teak Full Transom Swim Platform with Folding Ladder  
International Rule Navigation Lights  
Cabin Deck Hatch  
Forward Anchor Locker

Custom Deck Ventilators  
Fiberglass Nonskid Cockpit Deck  
Insulated Engine Compartment  
Cockpit Side Panel Storage  
Cabin Side Shelf Storage  
Insulated Ice Chests in Aft Deck  
Indirect Cockpit & Cabin Lighting  
Extra-wide Adjustable Back-to-Back Seats  
Aft Jump Seats Convertible into Bunk  
Cabin V-Bunk with Forward Bulkhead Mirror  
Safety-Glass, Full Vent Windshield  
Cabin Hull Windows  
Convertible Top  
Automatic Bilge Pump and Electric Blower  
Custom Dash with Recessed Instrumentation and Speedometer  
Custom Fused Switch Panel  
Single Lever Binnacle Control

## Factory Installed Options:

Recirculating Head (Portable or Stationary)  
Adjustable Helmsman Seats (in lieu of standard)  
Lounge Seat Foot Rest  
Convertible Dinette and Galley with:  
Sink, Ice Box, Alcohol Stove, and Electric Water System  
Alcohol/Electric Stove  
110 V/12 V Refrigerator  
110 V/115 V Dockside Power

Top Boot  
Side Curtains  
Aft Curtain  
Camper Aft Cover  
Electric Horn  
Dash Controlled Spotlight  
Windshield Wipers  
Hour Meter  
Compass  
Translucent Deck Hatch  
Hydraulic Trim Tabs



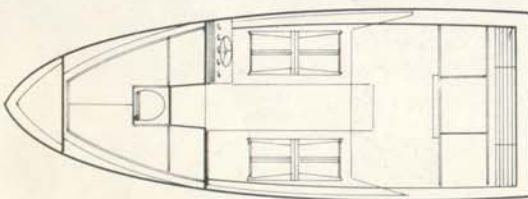
# SRV 220 Cuddy Cabin and Hardtop



International Rule Navigation Lights (Hardtop)  
 Cabin Deck Hatch  
 Forward Anchor Locker  
 Custom Deck Ventilators  
 Marine Carpeting  
 Insulated Engine Compartment  
 Cockpit Side Panel Storage  
 Cabin Side Shelf Storage  
 Insulated Ice Chests in Aft Deck  
 Indirect Cabin & Cockpit Lighting  
 Extra-wide Adjustable Back-to-Back Seats  
 Aft Jump Seats Convertible to Bunk  
 Cabin V-Bunk with Forward Bulkhead Mirror  
 Safety Glass Walk-through Windshield  
 Sliding Side Windows (Hardtop)  
 Convertible Top (Cuddy Cabin)  
 Automatic Bilge Pump & Electric Blower  
 Custom Dash with Recessed Instrumentation and Speedometer  
 Custom Fused Switch Panel  
 Single Lever Panel Control

## Factory Installed Options:

Full Transom Swim Platform with Folding Ladder  
 Recirculating Head (Portable or Stationary)  
 Galley and Convertible Dinette with:  
 Sink, Ice Box, Alcohol Stove, and Electric Water System  
 Alcohol/Electric Stove  
 110 V/12 V Refrigerator  
 110 V/115 V Dockside Power  
 Cabin Hull Windows  
 Top Boot (Cuddy Cabin)  
 Side Curtains (Cuddy Cabin)  
 Aft Curtain  
 Camper Aft Cover  
 Mooring Cover (Cuddy Cabin)  
 Windshield Cover Set (Hardtop)  
 Electric Horn  
 Dash Controlled Spotlight  
 Windshield Wipers  
 Hour Meter  
 Hydraulic Trim Tabs



## Specifications:

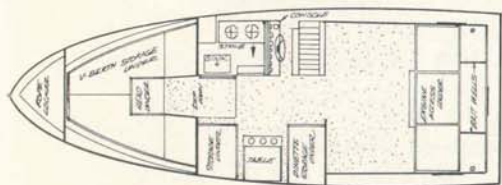
Gunwale Length	23' 0"	(7.01 m.)
Centerline Length	21' 7"	(6.57 m.)
Beam	96"	(2.44 m.)
Fuel Capacity	70 ga.	(265 l.)
Approximate Weight:		
Cuddy Cabin	3400 lbs.	(1542 k.)
Hardtop	3600 lbs.	(1633 k.)

## Standard Features:

Foam Flotation  
 Stainless Steel Bow & Stern Eyes  
 Stainless Steel Bow Rail  
 Heavy Duty Steering  
 Teak Taffrail  
 Teak Swim Platform with Folding Ladder  
 Inland Rule Navigation Lights (Cuddy Cabin)



## A yellow and white speedboat is shown from a high angle, moving quickly across the water. The boat has a white upper hull and a yellow lower hull. A woman with blonde hair is sitting in the cockpit, looking out. The boat is leaving a white wake behind it. An American flag is visible on the side of the boat.



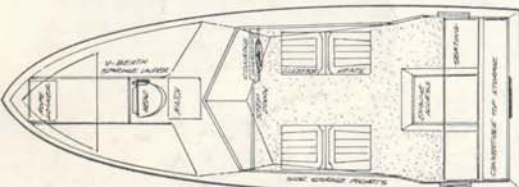
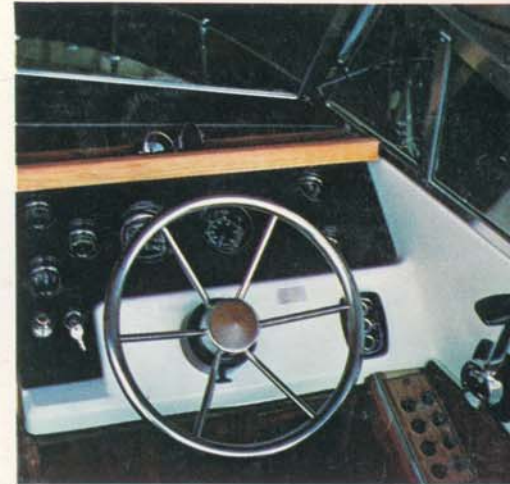
Gunwale Length	23' 0"	(7.01 m.)
Centerline Length	21' 7"	(6.57 m.)
Beam	96"	(2.44 m.)
Fuel Capacity	60 ga.	(227.11 l.)
Approximate Weight	3600 lbs.	(1633 k.)

Foam Flotation  
Stainless Steel Bow & Stern Eyes  
Stainless Steel Bow Rail  
Heavy Duty Steering  
Teak Taffrail  
Teak Swim Platform with Folding Ladder  
International Rule Navigation Lights  
Cabin Deck Hatch  
Forward Anchor Locker  
Custom Deck Ventilators  
Marine Carpeting  
Insulated Engine Compartment  
Cockpit Side Panel Storage  
Cabin Side Shelf Storage

Insulated Ice Chests in Aft Deck  
Indirect Cockpit & Cabin Lighting  
Adjustable Helm Seat  
Aft Jump Seats Convertible to Bunk  
Cabin V-Bunk with Forward Bulkhead Mirror  
Convertible Dinette and Galley with:  
Sink, Ice Box, Stove, and Electric Water  
System  
Safety Glass Windshield with Forward Cabin  
Vent and Sliding Side Windows  
Automatic Bilge Pump and Electric Blower  
Custom Dash with Recessed  
Instrumentation and Speedometer  
Custom Fused Switch Panel  
Single Lever Binnacle Control

Alcohol/Electric Stove  
110 V/12 V Refrigerator  
110 V/115 V Dockside Power  
Side & Aft Curtains  
Camper Aft Cover  
Windshield Cover Set  
Full Transom Swim Platform with Folding  
Ladder  
Cabin Hull Windows  
Recirculating Head (Portable or Stationary)  
Electric Horn  
Dash Controlled Spotlight  
Windshield Wipers  
Hour Meter  
Hydraulic Trim Tabs





Gunwale Length	21' 2"	(6.45 m.)
Centerline Length	19' 11"	(6.07 m.)
Beam	96"	(2.44 m.)
Fuel Capacity	40 ga.	(151.41 l.)
Approximate Weight	3100 lbs.	(1406 k.)

Foam Flotation  
Stainless Steel Bow & Stern Eyes  
Stainless Steel Bow Rail  
Heavy Duty Steering  
Teak Taffrail  
Teak Swim Platform with Folding Ladder  
Inland Rule Navigation Lights  
Custom Deck Ventilators  
Marine Carpeting  
Cabin Side Shelf Storage

- Insulated Engine Compartment
- Side Storage Panels
- Cabin Deck Hatch
- Cabin V-Bunk
- Indirect Cockpit Lights
- Cabin Lights
- Teak Drink Holders
- Extra-Wide Adjustable Back-to-Back Seats
- Aft Jump Seats
- Insulated Cooler under Aft Seat
- Skiff Windshield with Side Ventilators
- Convertible Top
- Electric Bilge Pump & Blower
- Upholstered Soft Top Storage Cover
- Single Lever Panel Control
- Custom Dash with Recessed
  - Instrumentation and Speedometer
- Custom Fused Switch Panel

- Top Boot
- Side & Aft Curtains
- Camper Aft Cover
- Mooring Cover
- Full Transom Swim Platform with Folding Ladder
- Electric Horn
- Windshield Wipers
- Dash Controlled Spotlight
- Hour Meter
- Recirculating Head (Portable or Stationary)
- Cabin Hull Windows





# SRV 200



## Specifications:

Gunwale Length	21' 2"	(6.45 m.)
Centerline Length	19' 11"	(6.07 m.)
Beam	96"	(2.44 m.)
Fuel Capacity	30 ga.	(113.56 l.)
Approximate Weight	2900 lbs.	(1315 k.)

## Standard Features:

Foam Flotation  
Stainless Steel Bow & Stern Eyes  
Stainless Steel Bow Rail  
Heavy Duty Steering  
Teak Taffrail  
Teak Swim Platform with Folding Ladder  
Inland Rule Navigation Lights  
Bow Hatch & Anchor Locker

Custom Deck Ventilators  
Marine Carpeting  
Insulated Engine Compartment  
Side Storage Panels  
Floor Storage  
Upholstered Soft Top Storage Cover  
Locking Glove Box Storage  
Insulated Floor Cooler  
Indirect Cockpit Lights  
Teak Drink Holders  
Adjustable Back-to-Back Lounge Seats  
Aft Jump Seats  
Insulated Cooler Under Aft Seat  
Walk-thru Safety Glass Windshield  
Convertible Top  
Electric Bilge Pump & Blower

Single Lever Panel Control  
Custom Dash with Recessed  
Instrumentation and Speedometer  
Custom Fused Switch Panel

## Factory Installed Options:

Top Boot  
Side & Aft Curtains  
Camper Aft Cover  
Mooring Cover  
Full Transom Swim Platform with Folding Ladder  
Electric Horn  
Windshield Wiper  
Dash Controlled Spotlight  
Hour Meter





# SRV 195 and 197



## Specifications:

Gunwale Length	19' 10"	(6.04 m.)
Centerline Length	18' 6"	(5.64 m.)
Beam	96"	(2.44 m.)

## Fuel Capacity

195	30 ga.	(113.56 l.)
197	28 ga.	(106 l.)

Approximate Weight	2800 lbs.	(1270 k.)
--------------------	-----------	-----------

## Standard Features/Sterndrive Models:

Foam Flotation  
Stainless Steel Bow & Stern Eyes  
Stainless Steel Bow Rail  
Heavy Duty Steering  
Teak Taffrail  
Teak Swim Platform with Folding Ladder  
Inland Rule Navigation Lights

Bow Hatch & Anchor Locker (195)  
Custom Deck Ventilators  
Marine Carpeting  
Insulated Engine Compartment  
Side Storage Panels  
Floor Storage  
Locking Glove Box Storage  
Insulated Floor Cooler (195)  
Indirect Cockpit Lights  
Teak Drink Holders  
Adjustable Back-to-Back Lounge Seats  
Aft Jump Seats  
Insulated Cooler Under Aft Seat  
Walk-thru Safety Glass Windshield  
Convertible Top  
Upholstered Soft Top Storage Cover  
Electric Bilge Pump & Blower

Single Lever Panel Control  
Custom Dash with Recessed  
Instrumentation and Speedometer  
Custom Fused Switch Panel

## Factory Installed Options/Sterndrive Models:

Top Boot  
Side & Aft Curtains  
Mooring Cover  
Tonneau Cover (197)  
Full Transom Swim Platform with Folding Ladder  
Electric Horn  
Windshield Wiper  
Dash Controlled Spotlight (195)  
Hour Meter



# SRV 185 and 187



Side Panel Storage  
 Floor Storage  
 Locking Glove Box Storage  
 Adjustable Back-to-Back Lounge Seats  
 Aft Jump Seats  
 Insulated Cooler Under Aft Seat  
 Safety Glass Walk-thru Windshield  
 Custom Dash with Recessed  
 Instrumentation and Speedometer  
 Teak Taffrail  
 Custom Deck Ventilators  
 Insulated Engine Compartment  
 Indirect Cockpit Lighting  
 Convertible Top  
 Electric Bilge Pump & Blower  
 Drink Holders  
 Single Lever Panel Control  
 Custom Fused Switch Panel

## Factory Installed Options/Sterndrive Models:

Top Boot  
 Side & Aft Curtains  
 Tonneau Cover (187)  
 Mooring Cover  
 Full Transom Swim Platform with Folding Ladder  
 Electric Horn  
 Windshield Wiper  
 Hour Meter

## 185 Convenience Package:

Teak Swim Platform with Folding Ladder  
 Upholstered Soft Top Storage Cover  
 Forward Anchor Locker Hatch

## 187 Convenience Package:

Teak Swim Platform with Folding Ladder  
 Upholstered Soft Top Storage Cover

## Specifications:

Gunwale Length	17' 10"	(5.43 m.)
Centerline Length	16' 8"	(5.08 m.)
Beam	89"	(2.26 m.)
Fuel Capacity:	18 gal.	(68.14 l.)
Approximate Weight:	2500 lbs.	(1134 k.)

## Standard Features/Sterndrive Models:

Foam Flotation  
 Stainless Steel Bow & Stern Eyes  
 Stainless Steel Bow Rail  
 Heavy Duty Steering  
 Inland Rule Navigation Lights  
 Marine Carpeting





# Outstanding Quality In Fiberglass Boats



OXFORD, MICHIGAN is our original home dating back to 1959. This plant has grown to become one of the largest and most modern fiberglass boat factories in the world, serving Sea Ray customers throughout the Midwest, East, and South.



PHOENIX, ARIZONA is the location of our Western manufacturing facility. We began operations here in 1968, and in the spring of 1971 expanded into a brand new factory designed specifically for boat manufacturing.



MERRITT ISLAND, FLORIDA is Sea Ray's newest site and the factory in which all 300 Series Sea Rays are manufactured. Also housed here is our design and development department; the mild climate and our waterfront facilities affording year-round testing capability.

When we introduced the first Sea Ray back in 1959, it was never our intention to be the biggest boat manufacturer—just the best.

This policy has served as our doctrine, and although we enter our eighteenth year of production as one of the largest pleasure boat builders in the world, we have never sacrificed our original dedication to quality. Thump the side of a Sea Ray hull and compare the solid feel to any other brand of fiberglass boat. Our rugged hull construction, which provides exceptional seaworthiness and a solid smooth ride—is second to none.

Manufactured of the finest materials available, all Sea Ray Boats comply with standards set by the United States Coast Guard, have been inspected for adherence to safety standards established by the Boating Industry Association, and are designed and engineered in accordance with numerous

BIA and American Boat and Yacht Council recommended practices.

Sea Rays are produced in three modern boat building facilities, and distributed to dealers throughout the United States—in Canada, Europe, South and Central America, Bermuda, Australia, and Asia. We are as proud of our dealer organization as we are of the design and construction of the boats themselves. Before acquiring a Sea Ray franchise, each dealer must demonstrate superior qualifications in business management, facilities, customer service, and boating leadership within his community. This selective policy has resulted in better boating enjoyment for you—the Sea Ray owner.

The 1977 Sea Ray line of high quality fiberglass boats presented in this brochure—is our best yet. We invite you to visit your local Sea Ray dealer and let him help you select the Sea Ray model that's just right for your needs.

## Limited Warranty

For a period of one year from the date of delivery to the original retail purchaser, SEA RAY BOATS warrants each SEA RAY BOAT to be free from defects caused by faulty workmanship or materials.

During this period, warranty repairs will be made without charge by SEA RAY BOATS at one of their manufacturing plants, or at SEA RAY's option, by an authorized SEA RAY dealer at the dealer's store or service center. Transportation costs to the SEA RAY manufacturing plant or to the authorized SEA RAY dealer's service center are the responsibility of the purchaser. All warranty repairs must be approved by an authorized SEA RAY representative.

Engines, outdrives, propellers and controls are covered by the warranties of the manufacturers supplying these units, and not by the provisions of this warranty.

This warranty does not cover used boats, windshield breakage, gelcoat or upholstery damage, or boats or parts which have been altered or subjected to misuse or negligence.

The obligation of SEA RAY BOATS under this warranty shall be limited to the repair or replacement of any part which is judged defective by SEA RAY BOATS. SEA RAY BOATS WILL NOT BE LIABLE FOR HAUL OUT, LAUNCH, TOWING OR STORAGE CHARGES, INCONVENIENCE OR LOSS OF TIME OR INCOME, OR ANY OTHER SPECIAL OR CONSEQUENTIAL DAMAGES OF ANY KIND OR NATURE. IMPLIED WARRANTIES, IF ANY, SHALL BE LIMITED TO THE DURATION OF THIS WRITTEN LIMITED WARRANTY.

The information contained in this literature is based upon the latest product information available at the time of publication approval. SEA RAY BOATS reserves the right to make changes at any time, without notice in the colors, equipment, specifications, materials, hulls and prices—and also, to discontinue models. When changes are made, we reserve the right to do so without incurring the obligations to equip or modify existing models built prior to the date of such changes.



OXFORD, MICHIGAN • PHOENIX, ARIZONA  
MERRITT ISLAND, FLORIDA



PRINTED IN U.S.A.